

Z●IN

Collection  
2024

**Our Expertise, Your Dream**

# OUR COMMITMENT

The logo for Zoin, featuring the letters 'Z', 'O', and 'IN' in a bold, white, sans-serif font. The 'O' is a solid white circle, and the 'IN' is positioned to the right of the 'Z'.

La nuova collezione Zoin, totalmente Made in Italy, offre una gamma completa di banchi a “Servizio Assistito” e “Self Service” affidabili a prezzi competitivi.

Ogni giorno, con i nostri prodotti, soddisfiamo i diversi linguaggi delle tradizioni e culture etno-gastronomiche del nostro pianeta.

L’attenzione all’ambiente è un must per Zoin: l’intera gamma utilizza il refrigerante eco-friendly R290.

Zoin fa parte della *Famiglia Criocabin* rimanendo comunque una entità ed un marchio indipendente.

The new Zoin collection, 100% Made in Italy, offers a full range of reliable and value-for-money assisted service and self-service units. Every day our products meet the needs of a full plethora of our planet’s traditions and ethnic cuisines.

Environmental protection is a priority for Zoin: the full range uses the eco-friendly coolant R290. Zoin is an independent brand and entity belonging to the Criocabin Family.

# OUR FUNCTIONALITY



Carne  
Meat  
Viande  
Fleisch



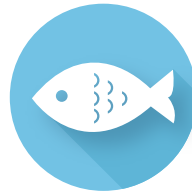
Bevande  
Drinks  
Boissons  
Getränke



Larghezza in cm.  
Width in cm.  
Largeur en cm.  
Breite in cm.



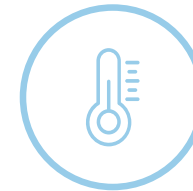
Salumi - Formaggi  
Sausages - Cheese  
Charcuterie - Produits Laitiers  
Wurstwaren - Milchprodukte



Pesce  
Fish  
Poisson  
Fisch



Lunghezza in cm.  
Length in cm.  
Longueur en cm.  
Länge in cm.



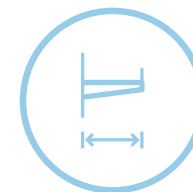
Classe climatica  
Climate class  
Classe climatique  
Klima-Klasse



Gastronomia  
Deli  
Deli  
Deli



Frutta e Verdura  
Fruits and Vegetables  
Fruits et Legumes  
Obst und Gemüse



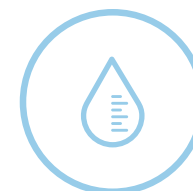
Profondità ripiano in cm.  
Shelf Depth in cm.  
Profondeur étagère en cm.  
Regal-Tiefe in cm.



Pasticceria  
Pastry  
Pâtisserie  
Bäckerei



Sushi



Capacità di carico in lt.  
Load capacity in lt.  
Capacité de charge en lt.  
Tragfähigkeit in lt.

# PATAGONIA



Width in cm.

91



Length in cm.

104 · 150  
200 · 250  
300



Climate class

C-2, Y-2: 3 M2  
C-1, Y-1: 3 H2  
25°C / u.r. 60%

## Studiato per attirare l'attenzione.

Patagonia è il modello di banco refrigerato ideale per attrarre i clienti: una vetrina perfetta per l'esposizione di prodotti di gastronomia, sandwich e piatti ready-to-eat. È disponibile con il vetro retto oppure con il vetro curvo.

### Design to catch attention.

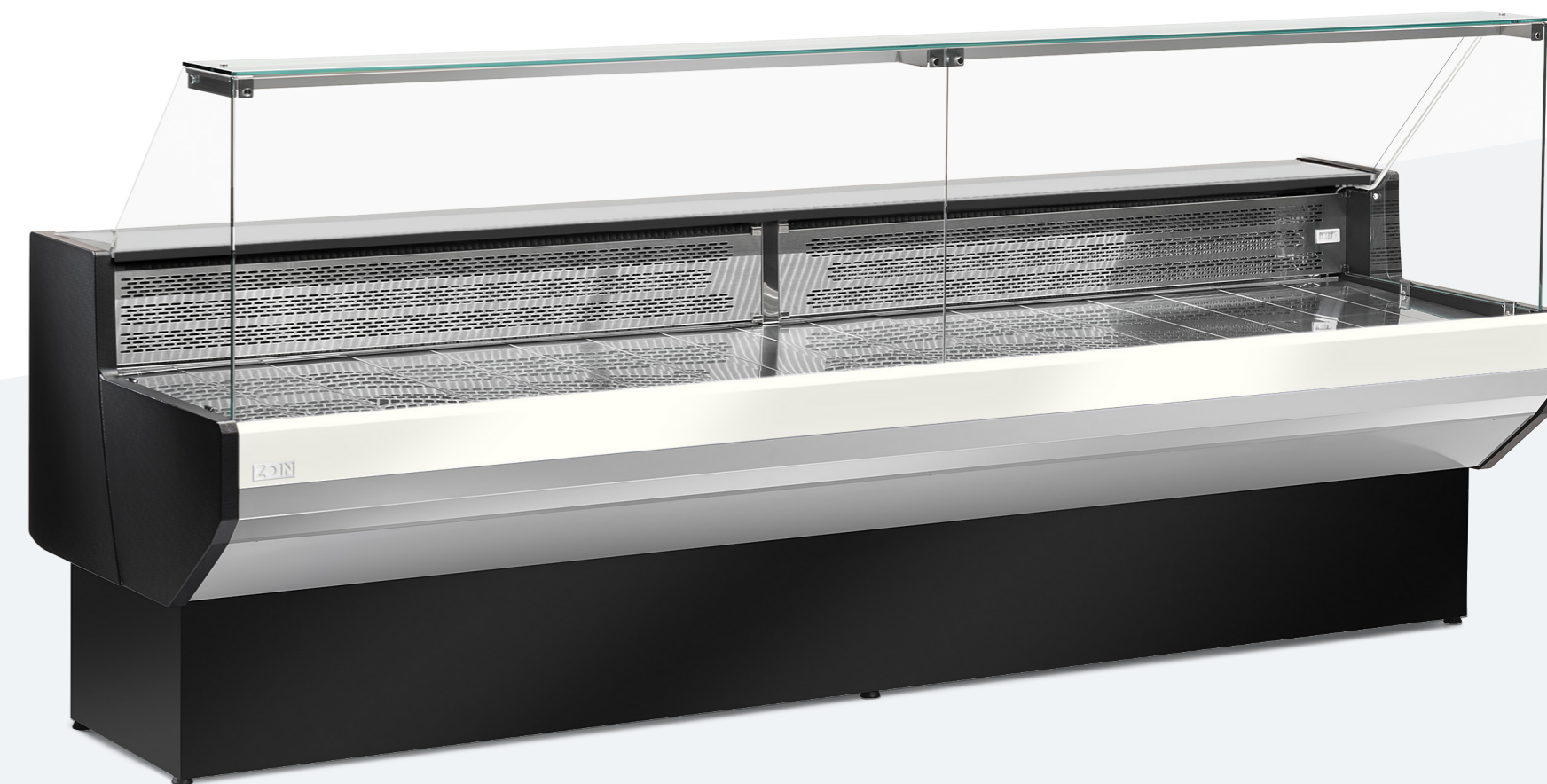
A refrigerated counter to attract consumers' attention: the perfect counter to display gastronomic products, sandwiches and ready meals. Available with straight or curved glass.

### Conçu pour attirer l'attention.

Patagonia est le modèle de comptoir réfrigéré idéal pour attirer les clients: une vitrine parfaite pour l'exposition de produits préparés, de sandwiches et de plats à emporter. Il est disponible avec une vitrine droite ou bien bombée.

### Als Blickfang entwickelt.

Patagonia ist das ideale Kühltheckenmodell, um den Blick der Kunden auf sich zu ziehen: eine perfekte Vitrine für die Präsentation von Feinkostprodukten, Sandwiches und verzehrfertigen Gerichten. Es ist mit geradem oder gebogenem Glas erhältlich.



D110 White Version C-1

# PATAGONIA



1

Struttura cappello in vetro curvo temperato.

Cap in curved tempered glass.

Structure plafond avec vitrine bombée en verre trempé.

Haubenstruktur aus gebogenem, gehärtetem Glas.

2

Illuminazione LED.

LED lighting.

Éclairage LED

LED-Beleuchtung

3

Zona esposizione in acciaio Inox.

Display area in stainless steel.

Zone d'exposition en acier inox.

Auslagefläche aus Edelstahl.

4

Piano lavoro in acciaio Inox.

Working plate in stainless steel.

Plan de travail en acier inox.

Arbeitsplatte aus Edelstahl.

Splendido  
Azzurro  
Y-2 D107

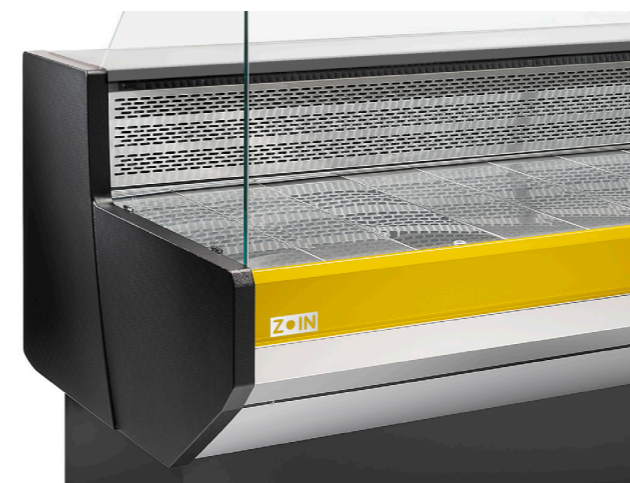
D97 Black  
Version Y-2



Grenade  
Version C-1 D145



D113 Yellow



Urban Wood D137



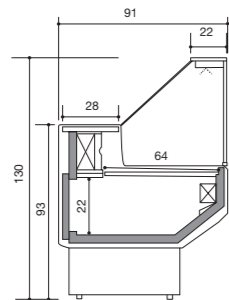
# PATAGONIA Versions

Gray Black Optional

Colori spalla  
End colours  
Couleurs des côtés  
Farben für Rückwände

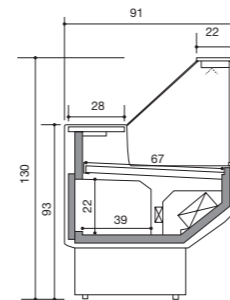


C-1



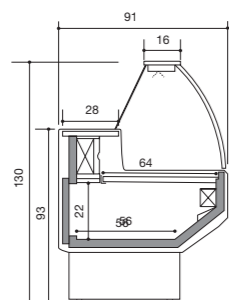
Statico con cella  
Static with cool storage  
Statique avec réserve  
Statisch mit Unterbaukuehlung

C-2



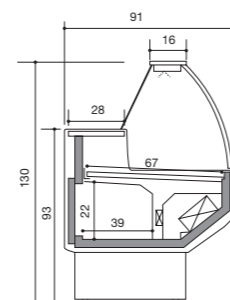
Ventilato con cella  
Ventilated with cool storage  
Ventiléé avec réserve  
Umluft mit Unterbaukuehlung

Y-1



Statico con cella  
Static with cool storage  
Statique avec réserve  
Statisch mit Unterbaukuehlung

Y-2



Ventilato con cella  
Ventilated with cool storage  
Ventiléé avec réserve  
Umluft mit Unterbaukuehlung



Eye-catching by design.

Z•IN

# SERVE-OVER

|          |  |                                             |             |                        |          |  |                                           |             |                                 |
|----------|--|---------------------------------------------|-------------|------------------------|----------|--|-------------------------------------------|-------------|---------------------------------|
| <b>A</b> |  | <b>VETRO CURVO</b><br>APRIBILE VERSO L'ALTO | <b>1</b>    | STATICO CON CELLA      | <b>A</b> |  | <b>CURVED GLASS</b><br>OPENING UPWARDS    | <b>1</b>    | STATIC WITH COOL STORAGE        |
| <b>B</b> |  | <b>VETRO DRITTO</b><br>APRIBILE A COMPASSO  | <b>2</b>    | VENTILATO CON CELLA    | <b>B</b> |  | <b>STRIGHT GLASS</b><br>OPENING DOWNWARS  | <b>2</b>    | STATIC WITH COOL STORAGE        |
| <b>C</b> |  | <b>VETRO RETTO</b><br>APRIBILE A COMPASSO   | <b>3</b>    | STATICO SENZA CELLA    | <b>C</b> |  | <b>VERTICAL GLASS</b><br>OPENING DOWNWARS | <b>3</b>    | STATIC WITHOUT COOL STORAGE     |
| <b>D</b> |  | <b>VETRO RETTO</b><br>APRIBILE VERSO L'ALTO | <b>4</b>    | VENTILATO SENZA CELLA  | <b>D</b> |  | <b>STRIGHT GLASS</b><br>OPENING UPWARDS   | <b>4</b>    | VENTILATED WITHOUT COOL STORAGE |
| <b>Y</b> |  | <b>VETRO CURVO</b><br>APRIBILE A COMPASSO   | <b>5</b>    | CALDO                  | <b>Y</b> |  | <b>CURVED GLASS</b><br>OPENING DOWNWARS   | <b>5</b>    | HOT-SECTION                     |
| <b>S</b> |  | <b>VETRO SELF SERVICE</b>                   | <b>6</b>    | NON REFRIGERATO        | <b>S</b> |  | <b>GLASS SELF SERVICE</b>                 | <b>6</b>    | NOT REFRIGERATED                |
|          |  |                                             | <b>7</b>    | CON SUPPORTO E RUOTE   |          |  |                                           | <b>7</b>    | WITH SUPPORT AND CASTORS        |
|          |  |                                             | <b>8</b>    | SENZA SUPPORTO E RUOTE |          |  |                                           | <b>8</b>    | WITHOUT SUPPORT AND CASTORS     |
|          |  |                                             | <b>FISH</b> | VERSIONE PER PESCE     |          |  |                                           | <b>FISH</b> | FISH VERSION                    |

# SELF SERVICE DISPLAY

|             |                                         |         |                                                            |             |                                              |         |                                                             |
|-------------|-----------------------------------------|---------|------------------------------------------------------------|-------------|----------------------------------------------|---------|-------------------------------------------------------------|
| <b>A</b>    | SPALLE A "BLOCCHI"                      | 130     | H MURALE CIRCA 130 CM.                                     | <b>A</b>    | ENDWALLS WITH BLOCKS                         | 130     | REF. WALL CABINET APROX H 130 CM.                           |
| <b>B</b>    | RIPIANI INCLINABILI CREMAGLIERE         | 130N    | H MURALE CIRCA 130 CM. BATTICARRELLO PLASTICA              | <b>B</b>    | INCLINABLE SHELVES WITH RACK                 | 130N    | REF. WALL CABINET APROX H 130 CM. PLASTIC BUMPER            |
| <b>F</b>    | FRUTTA VERDURA<br>CREMAGLIERE+ SPECCHIO | 130L    | H MURALE CIRCA 130 CM. BATTICARRELLO INOX VETRINO FRONTALE | <b>F</b>    | FRIUT & VEGETABLES WITH RACK AND MIRROR      | 130L    | REF. WALL CABINET APROX H 130 CM. INOX BUMPER & FRONT GLASS |
| <b>SG</b>   | SENZA GRUPPO INCORPORATO                | 160     | H MURALE CIRCA 160 CM.                                     | <b>SG</b>   | WITHOUT BUILT UNIT                           | 160     | REF. WALL CABINET APROX H 160 CM. PLASTIC BUMPER            |
| <b>FG</b>   | SENZA GRUPPO INCORPORATO FRUTTA VERDURA | 180     | H MURALE CIRCA 180 CM.                                     | <b>FG</b>   | WITHOUT BUILT UNIT FRIUT & VEGETABLES        | 180     | REF. WALL CABINET APROX H 180 CM. PLASTIC BUMPER            |
| <b>VIEW</b> | MURALI CON PORTE A VETRI SCORREVOLI     | 190     | H MURALE CIRCA 190 CM.                                     | <b>VIEW</b> | REFRIGERATED WALL CABINET WITH SLIDING DOORS | 190     | REF. WALL CABINET APROX H 190 CM.                           |
|             |                                         | 200     | H MURALE CIRCA 200 CM.                                     |             |                                              | 200     | REF. WALL CABINET APROX H 200 CM.                           |
|             |                                         | B20 B30 | RETROBANCO CON BASAMENTO                                   |             |                                              | B20 B30 | BACK-COUNTER WITH LOWER STRUCTURE                           |
|             |                                         | P20 P30 | RETROBANCO PENSILE DA APPENDERE O APPOGGIARE               |             |                                              | P20 P30 | BACK-COUNTER FOR HANGING OR PLACING ON LOWER STRUCTURE      |

\* Le informazioni relative alla classe energetica (secondo le normative Ecodesign 2019/2024 ed Energy Labelling 2019/2018) qui riportate sono riferite a modelli standard e precise configurazioni ed allestimenti del prodotto. La brochure si basa sulle informazioni disponibili al momento della sua pubblicazione. Ogni configurazione diversa da quella ivi rappresentata potrebbe comportare un cambiamento sensibile delle informazioni relative alla classe energetica. Per maggiori informazioni vi invitiamo a consultare il Registro Europeo dei Prodotti per l'Etichettatura Energetica EPREL oppure consultare il sito [www.zoin.it](http://www.zoin.it)

\* EN The energy class information (according to the Ecodesign 2019/2024 and the Energy Labelling 2019/2018 standards) given here refers to standard models and precise product configurations and fittings. The brochure is based on the information available at the time of its publication. Any configuration other than that depicted therein may result in a significant change in the energy class information. For further information, please consult the European Product Registry for Energy Labelling (EPREL) or consult the website [www.zoin.it](http://www.zoin.it)



# COLORI

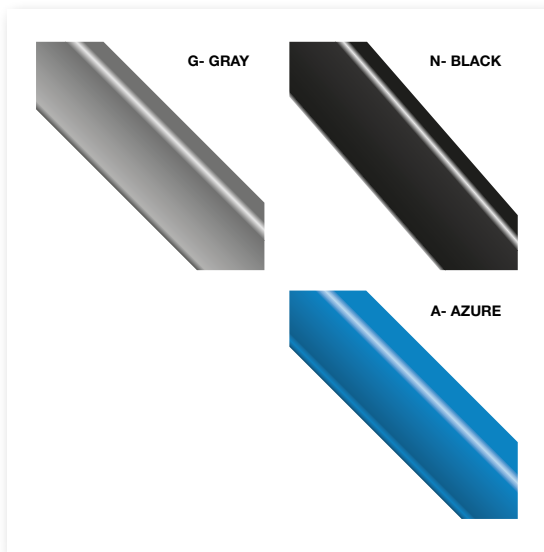
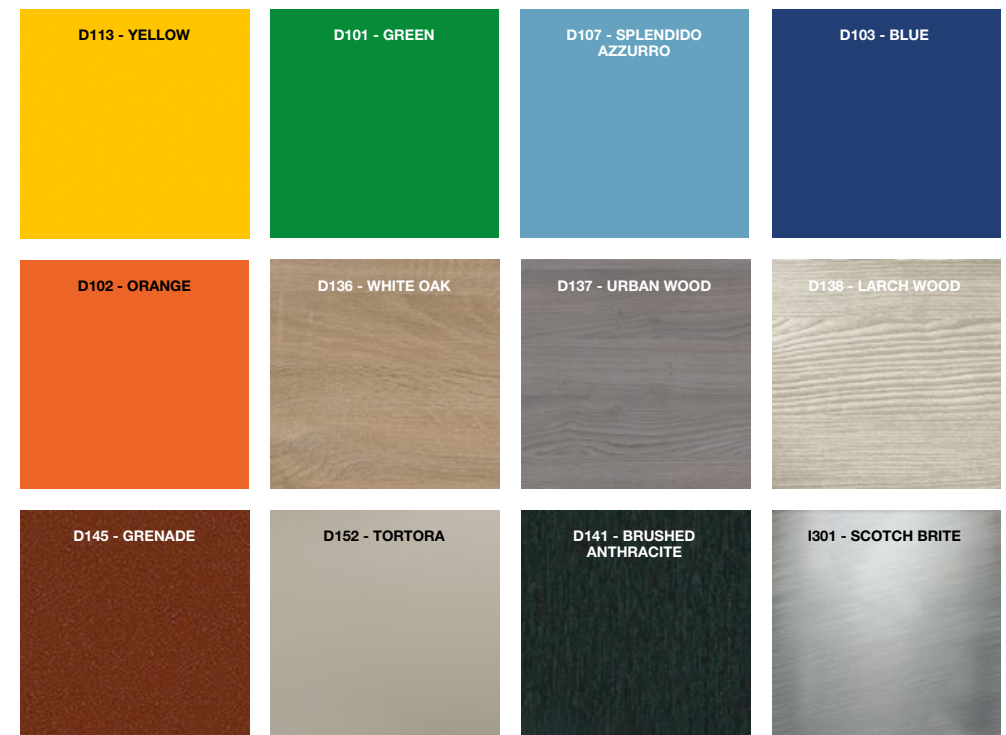
Colori disponibili  
Available colors  
Couleurs disponibles  
Verfügbare Farben

Batticarrello  
Bumpers  
Pare-chocs  
Stoßfänger

## Standard



## Special





**GLOBAL COOLING**

**ZOIN Srl**

Via Roma n. 320/1,  
35030, CERVARESE SANTA CROCE (PD) - ITALY  
Tel. (+39) 049 907 0172  
[www.zoin.it](http://www.zoin.it) [zoin@zoin.it](mailto:zoin@zoin.it)